

HEARTLAND CONSERVATION ALLIANCE

11TH ANNUAL PARTNERSHIP SUMMIT



**CELEBRATING OUR
PARTNERS AND 2024
ACCOMPLISHMENTS**

Heartland
CONSERVATION ALLIANCE



HEARTLAND CONSERVATION ALLIANCE AND OUR VALUED PARTNERS GATHERED AT BOULEVARD BREWING COMPANY TO CELEBRATE 2024 ACCOMPLISHMENTS. THANK YOU TO EVERYONE INSTRUMENTAL IN MAKING 2024 A GREAT YEAR. WE LOOK FORWARD TO WHAT WE WILL ACCOMPLISH TOGETHER IN 2025.



THANK YOU TO OUR SPONSOR



ARPA Grant

Heartland
CONSERVATION ALLIANCE

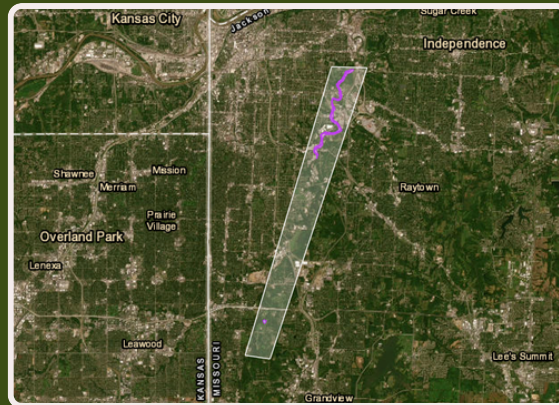
RESTORATION WORK & PUBLIC ENGAGEMENT

SUMMARY

MDNR ARPA Stormwater grant awarded to the City of KCMO with HCA as a subcontractor alongside Bridging the Gap, Deep Roots, and Mid-America Regional Council.

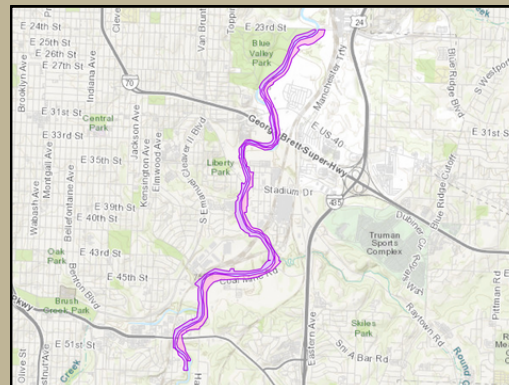
HCA is set to receive \$2.7M to serve as the lead subcontractor to restore 120-150 acres of the Blue River riparian zone between 23rd and 53rd St. while also supporting public education, community engagement, and research and monitoring services.

Through this grant, HCA is expanding its team by hiring for two new positions: Conservation Project Manager and Communications & Community Engagement Coordinator.



LOCATION

Northern Restoration Zone



FUNDING PARTNERS



SUBCONTRACTING PARTNERS



Blue River Nature Guide

Heartland
CONSERVATION ALLIANCE

OUTDOOR EDUCATION & RECREATION

SUMMARY

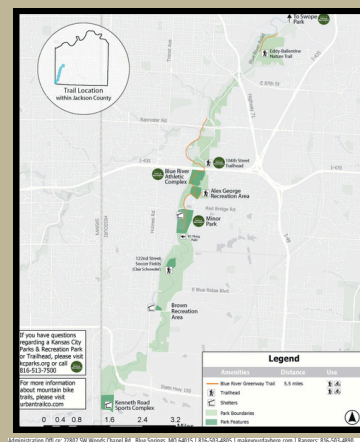
The Blue River Nature Guide (BRiNG) program, established in 2023, is a partnership between Jackson County, Missouri and HCA. This collaboration, formalized through a MoU outlines a shared commitment to enhancing the Blue River Parkway by providing free nature-based educational and recreational guided experiences for the community with a focus on underserved groups.

In it's inaugural year, the BRiNG program hosted 13 guided experiences, engaging 271 participants along the Blue River Parkway. We also partnered with community experts and organizations to help lead unique guided experiences for all to enjoy.



LOCATION

Blue River Parkway



MOU PARTNER



Actively seeking BRiNG partnerships with:

- All jurisdictions within the watershed
- Expert guides and nature-based activity leaders

Municipal Farm

Heartland
CONSERVATION ALLIANCE

28.4-ACRE CONSERVATION EASEMENT



SUMMARY

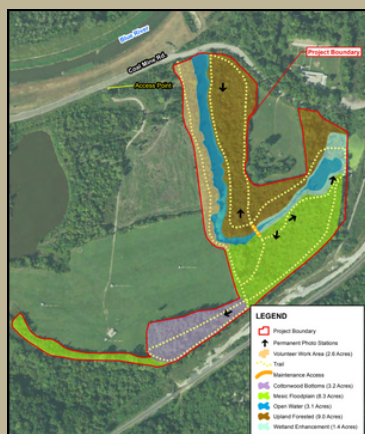
Owned by the City of KCMO, the 28.4-acre Municipal Farm Conservation Easement runs adjacent to the Blue River and is nestled within the 440-acre Municipal Farm, one of the largest contiguous spaces in KCMO south of the MO River.

Since 2018, HCA has partnered with the City of KCMO on a MDNR-funded project to restore this acreage, with Habitat Architects as the primary contractor and Vireo providing baseline documentation.

The conservation easement was signed on Sep 23, 2024, with HCA serving as its easement monitor.

LOCATION

4635 East Coal Mine Road, KCMO



FUNDING PARTNER



ADVISORY PARTNER



CONTRACT PARTNERS





Blue River Report Card

Heartland
CONSERVATION ALLIANCE

ENVIRONMENTAL AWARENESS



SUMMARY

The Blue River Report Card is a unique iterative process that evaluates the health of the Blue River watershed (upper, middle, and lower sections) using data across six categories, each with 2 to 3 indicators. This approach helps assess ecological health and the community's connection to the river while guiding future conservation efforts and updates to the Blue River Action Plan.

The 2024 Update has involved over 1,000 hours from staff, partners, and volunteers to collect and analyze data.

The entire Blue River Watershed received a grade of "C" in 2021, with an updated grade expected in 2025 that will be used to inform the Action Plan.

REPORT CARD RESULTS

Pending



PARTNERS & VOLUNTEERS

Facilitators: Dr. Jess Hartel (HCA) & Ian Fannin-Hughes (HCA Board)

Committee Chairs: Dr. Jess Hartel (HCA), Natalie Unruh (MARC), Rachel Hanson (KU Medical Center), Brian Nowotny (Jackson County Parks + Rec), Logan Heley (HCA), Regan Tokos (HCA Board), Bill Blessing (HCA Board), Ian Fannin-Hughes (HCA Board)

Committee members: Hunter Moore (BTG), Cloey Adrian (Johnson County), Julie Roberts (Johnson County), Chris Luther (KU), John Schumacher (USGS), Darius Uche (USGS), Jacobo Barriga (BTG), Cara Coates (MDC), Scott Schulte (HCA Board), Jenny Witt, Amelia Lane (KWO), Kevin Baugh (Johnson County), Hunter Strom, Josh Tapp

Event Sponsor

Heartland
CONSERVATION ALLIANCE

THANK YOU FOR YOUR SUPPORT



A PARTNER IN ENVIRONMENTAL SUSTAINABILITY

CO₂ Emission Reductions Targets



ENERGY'S ENVIRONMENTAL COMMITMENT

Looking forward and innovating now

- We are committed to meeting the evolving energy needs of our customers and communities.
- Providing sustainable energy has always been important to us. And because it's even more important to you now, it's an even bigger part of our plans.
- Energy is steadily moving towards 70% carbon reduction by 2030 from our 2005 baseline, and our goal of reaching net-zero carbon emissions by 2045.*
- The electricity we create with our generation facilities contribute the most to our emissions. As we continue to add renewables, while maintaining reliability and affordability, we expect to continue progressing towards our goals.



Habitats/Havens

See how we encourage habitats rich in wildlife and vegetation.



Our Energy Mix

Learn how we use a diverse mix of energy sources to power our community.



Clean Commitment

See how we deliver a reliable, safe, affordable energy, along with our plans to reduce carbon output.



Green Team

Green Team is a volunteer group taking on local projects.



Avian Protection

Energy is a key piece of successful falcon recovery.